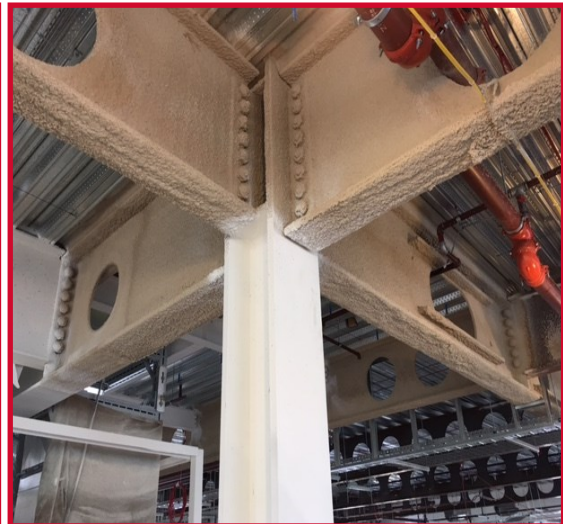


## FIREPROOFING PRODUCT CASE HISTORY

# CHRISTCHURCH HOSPITAL ACUTE SERVICES BUILDING

<b>PROJECT:</b>	Christchurch Hospital Acute Services Building	<b>DATE:</b>	Construction 2016-2018
<b>LOCATION:</b>	Christchurch, New Zealand	<b>SALESPERSON:</b>	Tony Vos / Donovan Erasmus
<b>CONTRACTOR:</b>	CPB Contractors	<b>SUBSTRATE:</b>	Mild Steel
<b>FABRICATOR:</b>	Thai Herrick	<b>PROJECT SIZE:</b>	6,000+ tonnes steel 62,000m <sup>2</sup> floor space
<b>APPLICATOR:</b>	The Connect Group		



### SURFACE PREPARATION

Wire-brushed, cleaned black steel (for cementitious fire protection)  
Abrasive blast to AS 1627.4 Class 2.5 (for all other coating systems)

### COATING SYSTEMS

**Interior concealed FR:** Southwest Type 5GP (direct to clean, black steel)

**Interior concealed:** Carboguard 893 @ 75µm DFT

**Interior concealed FR:** Carboguard 893 @ 75µm DFT / Firetex FX2003

**Interior visible:** Carboguard 893 @ 75µm DFT / Resene Uracryl 802

**Interior visible FR:** Carboguard 893 @ 75µm DFT / Firetex FX2003 / Resene Uracryl 802

**Exterior visible accessible steelwork:** Carbozinc 859 @ 75µm DFT / Armourcote 510 @ 175µm DFT / Resene Uracryl 403 @ 75µm DFT

### NOTES

This project is the largest government building within the Christchurch rebuild and includes operating theatres, radiology, ICU, helipad and 400 inpatient beds. Carboline primers were applied at fabrication in Thailand for compatibility with Altex NZ systems. Carboline 893 - NZ equivalent Carboguard 635 & Carbozinc 859 - NZ equivalent Carbozinc 859 EZ2.